



The Legacy Companies  
3355 Enterprise Avenue, Suite 160, Fort Lauderdale, FL 33331  
Sales: (954) 202-7419 • Sales@TheLegacyCompanies.com  
Tech Service: (877) 368-2797 • Service@MaxxHelp.com

Project Name: \_\_\_\_\_  
Location: \_\_\_\_\_  
Item #: \_\_\_\_\_ Qty: \_\_\_\_\_  
Model: \_\_\_\_\_

www.MaxximumFoodService.com

## 125lb SELF CONTAINED ICE MAKER (w/ Integrated Ice Bin)

Model: ☐ MIM125H

International Model: Add -50 (220V/50Hz/1Ph)  
or -60 (220V/60Hz/1Ph)



**Half Slab Ice Cubes**  
Inches: 7/8 x 7/8 x 3/8  
mm: 22.2 x 22.2 x 9.5

### REFRIGERANT

- CFC & HCFC free R-134A

### ELECTRIC

120V/60Hz/1 Ph (NEMA 5-15P)  
(220V/50 or 60Hz/1ph available as an option)



Self contained ice maker for freestanding or built in undercounter applications. Can produce up to 125 pounds of ice per day (under the right conditions). Includes an integrated 35 pound storage bin with lift up insulated plastic cover. Stainless steel construction provides durability to a unit that is low-maintenance and easy to clean. Front breathing design provides cooling air to the condensing unit. Vertical evaporator and proven ice making technology assures years of reliable ice production. The MIM125H comes with a NEMA 5-15 cord set so it's installation only requires the hookup of a water supply and drain.

### ICE PRODUCTION

Air Temp 70°F (21°C) Water Temp 50°F (10°C)  
Daily Ice Production: 125 lbs (56.7kg)  
Energy Consumption 11.3Kw/100lb of ice produced  
Water Usage 22 gallon/100lb of ice produced

Air Temp 90°F (32°C) Water Temp 70°F (21°C)  
Daily Ice Production: 102 lbs (46.3kg)

Storage Bin holds 35lbs of ice with automatic overflow prevention  
Gravity Drain connection is required, along with a water supply line.  
Addition of a supply line water filter is recommended to deliver a higher quality water source.

### OPERATING REQUIREMENTS

Ambient Temperature Range 50° to 99°F (10° to 37°C)  
Water Temperature Range 40° to 90°F (4° to 32°C)  
Water Supply Line Connection 3/8" FPT  
Water Pressure Range  
Min PSI 15 Max PSI 75 (above 75 requires a regulator)  
Min Bar 1.0 Max Bar 5 (without a regulator)

### FEATURES and CONSTRUCTION

- Exterior Material: Stainless Steel with Black Trim
  - Air Cooled Compressor
  - Programmable, solid state, digital electronic control system.
  - Built-In Self Cleaning Mode for use with nickel safe cleaning solution
  - Includes: Scoop  
Tubing for Supply and Drain Lines  
NEMA 5-15 cord set for simple installation
- \* A Water filter is recommended for a more efficient operation with less required maintenance and cleaning.  
\* 3<sup>rd</sup> Party Approvals: ANSI NSF 12, ANSI UL 563 & DOE2017



Intertek  
Certified to  
ANSI-NSF 12



ETL  
LISTED  
Certified to  
ANSI UL 563



### Maxx Ice WARRANTY (USA / CANADA)

One (1) year parts  
One (1) year on-site labor  
Five (5) years compressor (part only)  
Administered by The Legacy Companies, 877.368.2797

Due to periodic changes in designs, methods, procedures, policies and regulations, the specifications contained in this sheet are subject to change without notice. While we exercise good faith efforts to provide information that is accurate, we are not responsible for errors or omissions in information provided or conclusions reached as a result of using the specifications. By using the information provided, the user assumes all risks in connection with such use.

The built in performance enhancing functions ensure that given proper attention and preventative maintenance, each Maxx Product will deliver years of trouble free, reliable, low maintenance, efficient operation.

6/9/17 D

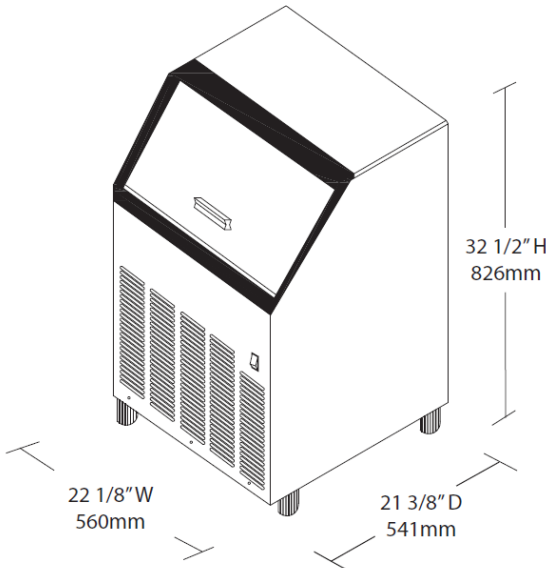


The Legacy Companies  
3355 Enterprise Avenue, Suite 160, Fort Lauderdale, FL 33331  
Sales: (954) 202-7419 • Sales@TheLegacyCompanies.com  
Tech Service: (877) 368-2797 • Service@MaxxHelp.com

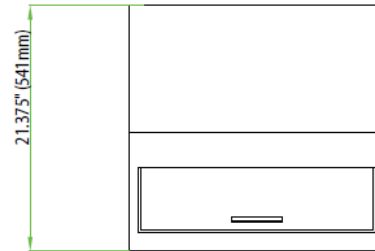
Project Name: \_\_\_\_\_  
Location: \_\_\_\_\_  
Item #: \_\_\_\_\_ Qty: \_\_\_\_\_  
Model: \_\_\_\_\_

www.MaxximumFoodService.com

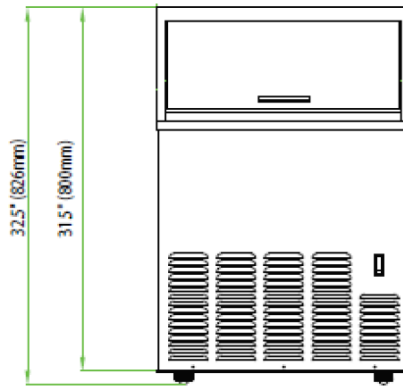
## 125lb SELF CONTAINED ICE MAKER (w/ Integrated Ice Bin)



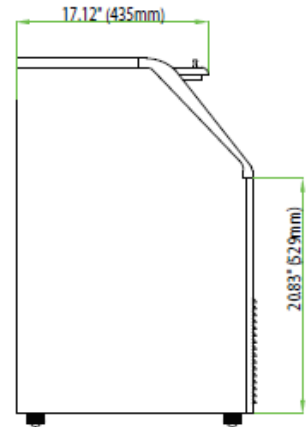
Top View



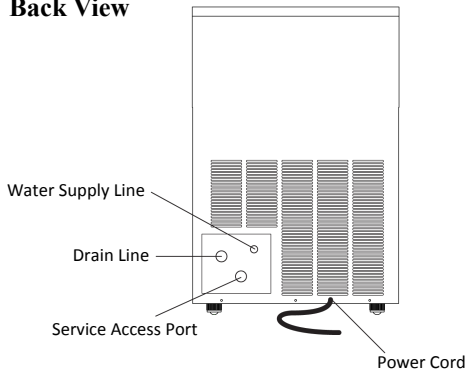
Front View



Side View



Back View



	MIM125H
In: External Dimensions W x D x H	22.125 x 21.375 x 32.5
mm: External Dimensions W x D x H	560 x 541 x 826
Electrical Amp Draw	
120V	11.8 max (normal or nominal draw 6.3 amps)
220V	6.8 max (normal or nominal draw 3.6 amps)
Unit Weight	110 lb / 50kg
Shipping Weight	125 lb / 57 kg
Production based on ambient conditions	
50°F Water / 70°F Air	Up to 130 lbs of ice/day
70°F Water / 90°F Air	105 to 110 lbs of ice/day
Ice Cube Produced	Half Size Slab Cube

Due to periodic changes in designs, methods, procedures, policies and regulations, the specifications contained in this sheet are subject to change without notice.  
While we exercise good faith efforts to provide information that is accurate, we are not responsible for errors or omissions in information provided or conclusions reached as a result of using the specifications.  
By using the information provided, the user assumes all risks in connection with such use.